

Fastir - Omrører

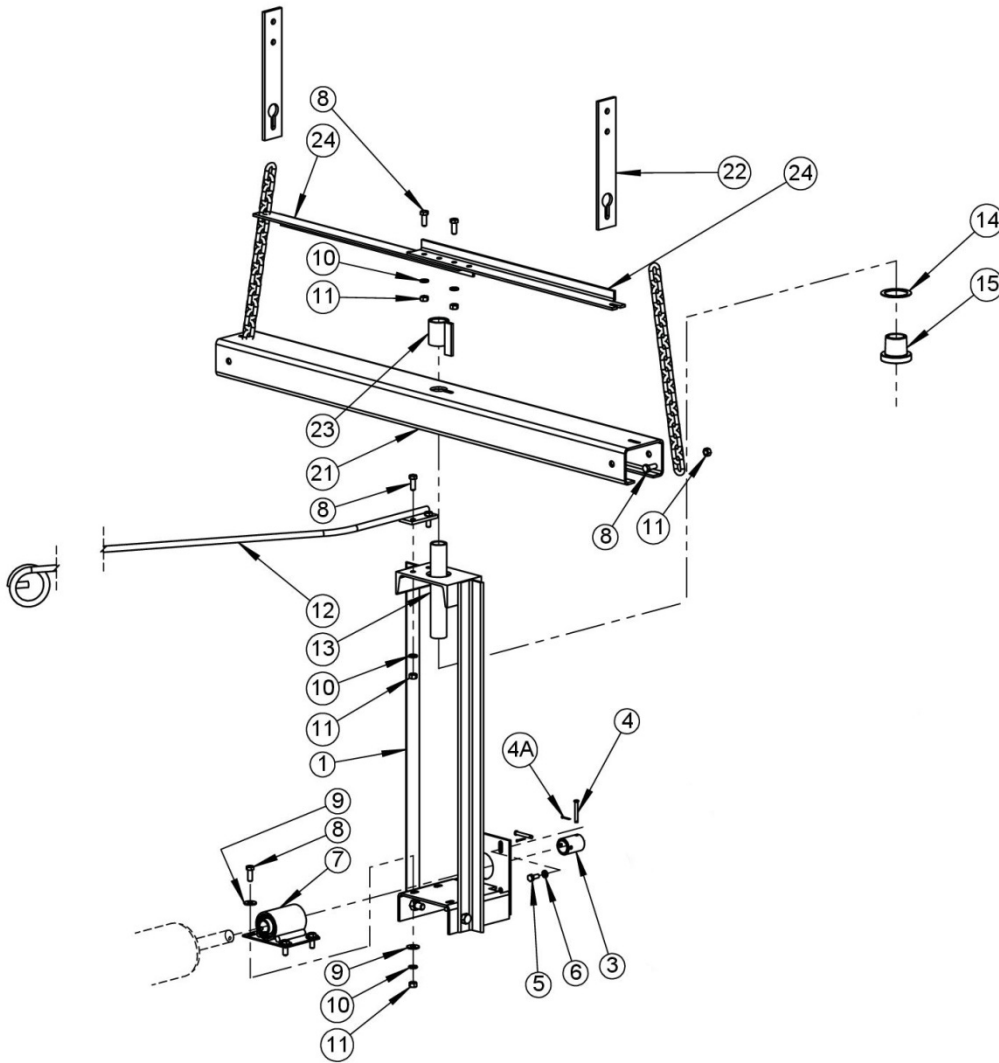


Mimersvej 5 · DK-8722 Hedensted

Tel +45 75 68 53 11

www.sukup-eu.com

CENTER HANGER ASSEMBLY



120A00-14-CDK050 – Rotating contact for stirring system, 16 pol, 2 + 3 augers.
120A00-14-CDK070 - Rotating contact for stirring system, 20 pol, 4 + 5 augers.



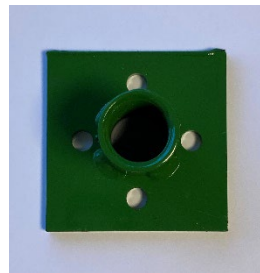
202SK1SI63-F1-2KL – Gearmotor for rotating bar on stirring system, 1 phase, 2 capacitor system (older)



102A5318-DK Ny kobling til omrørebom



102A5318 Rørforbindelse 1" til omrøremotor og bom



102A5597 Plade adaptor til drejekontakt



202SK1SI63-40-F3 - Gearmotor for rotating bar on stirring system, 3 phase system

121000241443 Nippelmuffe

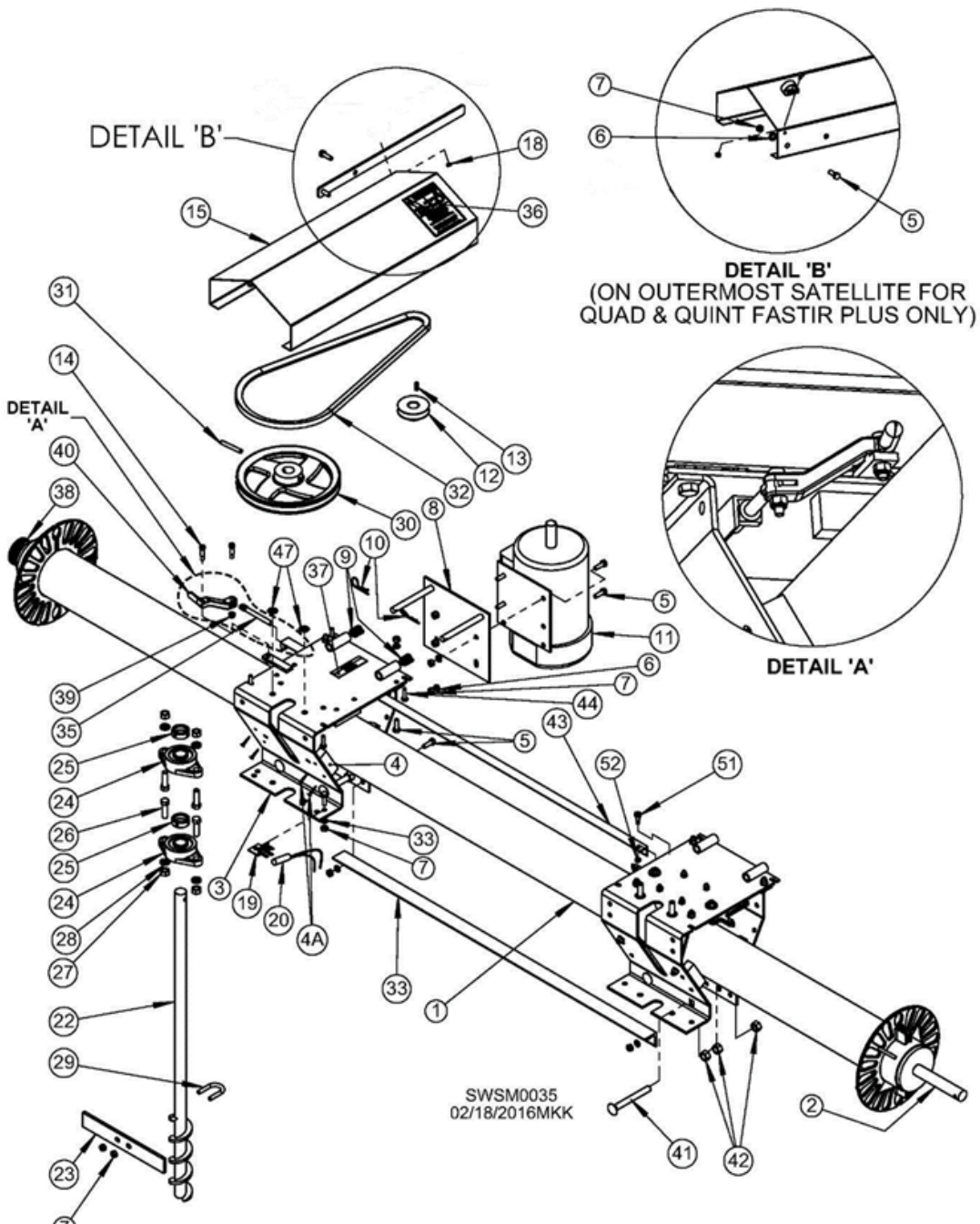


1210413112349 Forskruning

Fastir - Omrøre

Ref#	Description	Qty	Part nr.
1	Center Hanger (Fastir)	1	
	18'-54'		A7504
	60'		A75043
2	Gearmotor (prior 2014)	1	202SK1SI63-F1-2KL
	Gearmotor, 3 Faset		202SK1SI63-40-F3
	Screen for gearmotor/bom		3117035B
3	Tube Coupler, 1" ID	1	J5318
3A	Claw coupler (DK) complete	1	102A5318-DK
4	Safty-pin (incl. Split J1419 (4A))	2	J1538
	Safety-pin DK		J1538-DK
4A	Split		J1419
5	Bolt 5/16 - 18 x 3/4 Gr. 5	4	J0520
6	Lockwasher 5/16	4	J1200
7	Pillow Block for 21' - 36' bin	1	A5649
	Pillow Block for 42' - 54' bin		A5651
	Pillow Block for 60' bin		A56491
8	Bolt, 3/8 - 16 x 1" Gr. 5	8	J0606
9	FlatWasher, 3/8"	4	J1117
10	LockWasher, 3/8"	8	J1205
11	Nut, 3/8" - 16	8	J1020
12	Cord Hanger	1	A5609
13	Hanger Pipe 18-24'	1	A5603
	Hanger Pipe 27'	1	A5604
	Hanger Pipe 29-31'	1	A5605
	Hanger Pipe 33-37'	1	A5606
	Hanger Pipe 42'	1	A5607
	Hanger Pipe 48'	1	A5608
	Hanger Pipe 54'	1	A56082
	Hanger Pipe 60'	1	A56083
14	Brass Washer	1	A5601
15	Cast Bushing	1	A5602
16	Angle 90° stirringsystem	1	121000092408
17	Nippelmuffe	1	121000241443
18	Forskruning	1	1210413112349
21	Channel Hanger 21'-48'	1	A4827
	Channel Hanger for 54'-60'	1	A4830
22	Hanger, 11" Large stirring Machine	2	A7509
23	Coupling w/tab	1	A56101
24	Chain Spreader Bar Kit - Optional	1	A5635
25	Chain, 4-1/2 (Bins up to 22')	2	A4823
	Chain 5-1/2 (Bins 22 to 34')		A4824
	Chain 6-1/2 (Bins 34 on up)		A4825
26	Tube (for protection of cable) 1" 60 cm.	1	311726111

Satelit



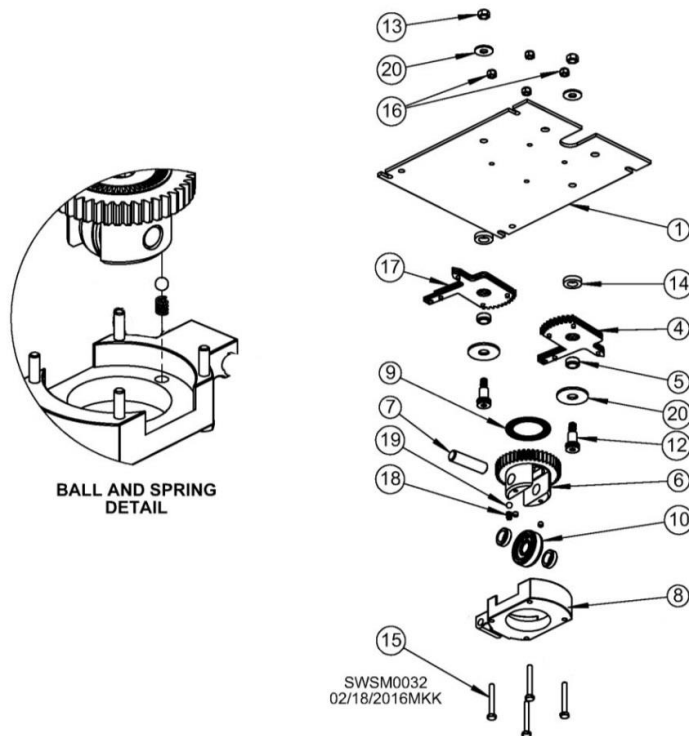
Ref#	Description	Qty	15'-36'	42'-54'	60'
1	Crosstube, Fastir, 18'	1	A8126		
	Crosstube, Fastir, 21'	1	A8128		
	Crosstube, Fastir, 24'	1	A8130		
	Crosstube, Fastir, 27'	1	A8132		
	Crosstube, Fastir, 30'	1	A8134		
	Crosstube, Fastir, 33'	1	A8136		
	Crosstube, Fastir, 36'	1	A8138		

Fastir - Omrøre

	Crosstube, Fastir, 42'	1		A81372	
	Crosstube, Fastir, 48'	1		A81371	
	Crosstube, Fastir, 54'	1		A81353	
	Crosstube, Fastir, 60'	1			A81354
2	Inner Slug, 1" Shaft	1	A4822		
	Inner Slug, 1-1/4" Shaft	1	A4807	A4817	
3	Satellite Carriage	1	A8502	A6135	A6136
3A	Carriage Primary (knurreleje)		A8501D	A6130	A6132
4	Bearing Block incl. Screws (J0463)	6	A8561	A8561	A8561
5	Bolt, 5/16" - 18 x 1"	7	J0527	J0527	J0527
6	Lockwasher, 5/16", Split	7	J1200	J1200	J1200
7	Nut, 5/16"	9	J1002	J1002	J1002
8	Motor Mount	1	A5209D	A5209D	A5209D
9	Spring Comp.	2	J2365	J2365	J2365
10	Hairpin Clip	3	J5410	J5410	J5410
11	Elmotor 2,2 kW/1400/B3 Ø24		12710220SH	12710220SH	12710220SH
12	Pulley SPA 85-1 f/1210T	1	204121008501	204121008501	204121008501
	Taperlock 1210-24	1	204101210024	204101210024	204101210024
13	Key, 3/16" x 3/16" x 3/4"	1	A7522	A7522	A7522
14	Shoulder Bolt, 5/16", 3/4"	3	J0521	J0521	J0521
15	Outer Carriage Shield	1	A8508	A6120	A6122
17	Machine Screw #10-24	1	J0514	J0514	J0514
18	Nut, #10-24	1	J0985	J0985	J0985
19	Tilt Switch Bracket	1	A5365	A5365	A5365
20	Tilt Switch	1	A5365T	A5365T	A5365T
22	Down Auger	1	A4765	A4765	A4765
23	Flinger	1	A5616	A5616	A5616
24	Bearing 1"	2	J00031-SKF	J00031-SKF	J00031-SKF*
25	Included in bearing				
26	Bolt, 7/16" 1 1/2" Gr. 5	4	J0710	J0710	J0710
27	Nut 7/16" - 14	4	J1035	J1035	J1035
28	LockWasher, 7/16"	4	J1210	J1210	J1210
29	U-Bolt	1	J0810	J0810	J0810
30	Pulley 9" x 1"	1	J0355	J0355	J0355
31	Rollpin, 5/16" x 2 1/4"	1	J1510	J1510	J1510
32	Belt	1	3101AX48	3101AX52/54(f.54')	3101AX54
33	Tie bar (Specify bin size)				
35	Bolt, Spade	1	A8550	A8550	A8550
36	Decal, Warning	1	L0284	L0284	L0284
37	Decal, Replace Shield	1	L0271	L0271	L0271
38	Outer Slug w/ drive wheel	1	A8085	A8089	A8089
39	Locknut, 1/4"	3	J0992	J0992	J0992
40	Toggle Arm	1	A8505	A8505	A8505
41	Bolt, Carriage	4	J07592	J07592	J07592
42	Nut, Hex, 1/2"	12	J1040	J1040	J1040
43	Reversing Rod		Varies with bin size		
44	Bolt, 1/4" x 1"	4	J0508	J0508	J0508
46	Lockwasher, 1/2"	3	J1215	J1215	J1215
47	Push Nut, 7/16"	2	J1036	J1036	J1036
48	Reversing Carriage Plate	4	A80342	A8060	A80601

Fastir - Omrøre

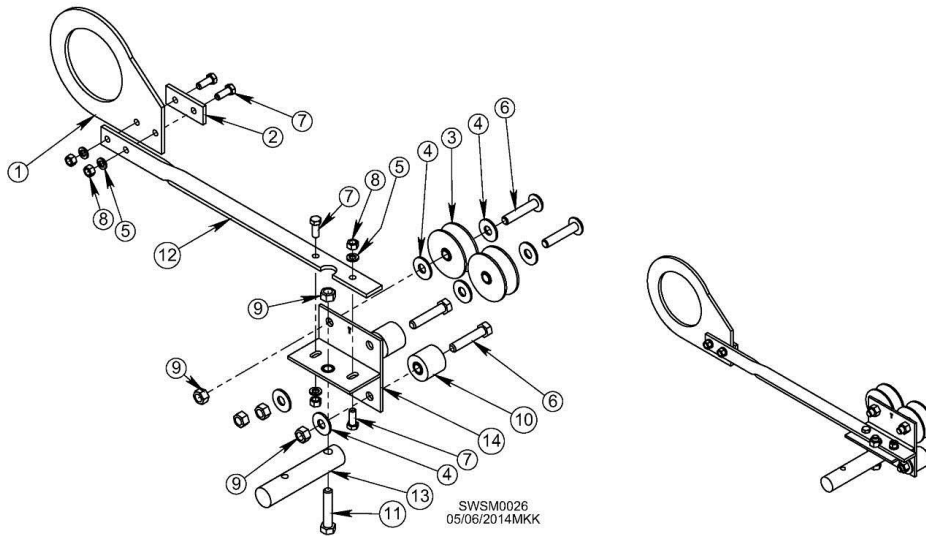
REVERSING MECHANISM ASSEMBLY



Ref#	Description	Qty	Comp.#
1	Plate Reversing Carriage	1	A5693
2	Rød Gummistop	1	1001016-dob
4	Toogle Gear	1	A80453
5	Bushing, 1/2" x 3/4" x 5/8"	2	J00823
6	Gear directional	1	A8043
	Set Screws 1/4"x1/4"	2	J1074
7	Pin, 2 3/8" long	1	A8044
8	Housing	2	A8042
9	Thrust Bearjno	1	J0058
10	* Knurled Drive Bearing (Replacement for J0057) (Complete with Bushings)	1	A80691*
	Knurled Bearing	1	A8069
	Bushing. 339	2	A8074
	Snap Ring. 1.5652 TRC	1	J3696
12	Bolt, 1 1/2"-13 x 1 -1 1/2" - Gr. 5	2	J07229
13	Nut, 1/2" - 13, Center Lock Jam	2	J1025
14	Machine Bushing, 1 1/2" - 18 Ga.	2	A85075
15	Boll, 1 1/4"-20 x 2" Gr. 5	4	J05134
16	Lock Nut, 1/4"-20	4	J0992
17	Reversing Gear	1	A80452
18	Spring, Comp, 5/16" OD x .54" long	1	J2363*
19	Ball, Steel, 5/16"	1	J3308*
20	Flatwasher, 3/8, PLT	2	J1117

*Sold together 10-18-19

Fastir - Omrøre



Ref #	Description	Qty	Comp #
1	Bracket, Plate, Trolley – 4 ½", UHMW	1	A4517
	Bracket, Plate, Trolley – 5 ½", UHMW	1	A45171
2	Trolley Bracket Cover	1	A4518
3	Wheel, Trolley, w/ Bushings	2	A6048
3A	Bushing, 1/2" x 3/4" x 3/4"		J0073
3B	Bushing, 1/2" x 3/4" x 1/2"		J0072
4	Flatwasher, 1/2"	6	J1125
5	Lockwasher, 3/8", PLT	4	J1205
6	Screw, 1/2"-13, 2.5", Gr5, BHCS	5	J07463
7	Screw, 3/8"-16, 1.25", PLT	4	J0616
8	Nut, Hex, 3/8"-16, PLT	4	J1020
9	Nut, Hex, Lock, 1/2" - 13	5	J1042
10	Roller, Trolley, w/ Bushings	2	A6049
10A	Bushing, 1/2" x 3/4" x 1"		J0074
10B	Bushing, 1/2" x 3/4" x 1/2"		J0072
11	Screw, ½"-13, 2.5", GR5, HHCS	3	J0746
12	Bracket, Bar, Pivot Trolley	1	A45161
13	Shaft, Connect, Pivot Trolley	1	A45131-01
14	Bracket, Weldment, Pivot Trolley	1	A45122

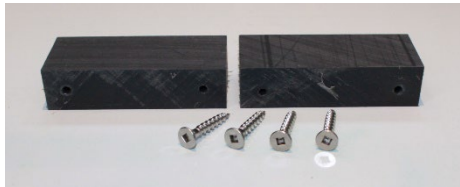
Common Replacement Parts

Following are photos, part numbers and descriptions of common replacement parts on Sukup Fastir. For reference, **parts are pictured on graph paper with half cm. squares.**

Fastir



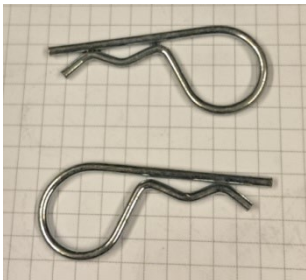
J0463 – Screws for A8561



A8561 – Bearing block incl.Screws



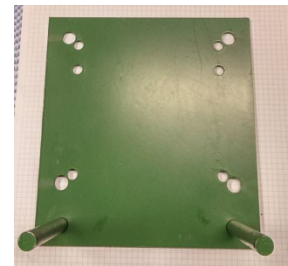
J1538 – Safety pin, stirring system
Incl. split J1419. For A5318



J5410 – Hairpin clip



J23651 – Spring Comp., 1 ½”
CL x ½” ID



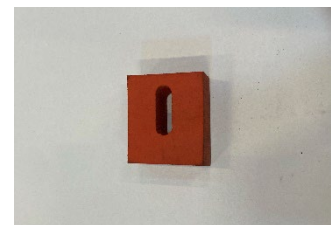
A5209D – Motor mount



200AX48 – Belt for stirring
system, 4 ½”, for tube,
21’- 36’ bin

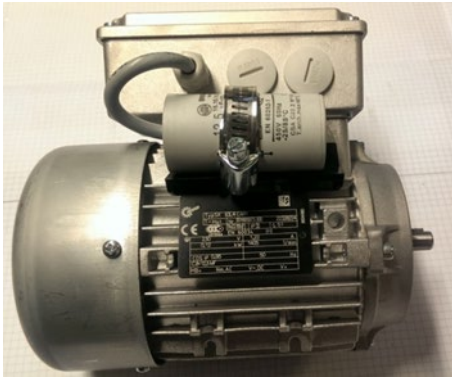


200AX52 – belt for stirring
system, 5 ½”, tube, 42’-
60’ bin



1981001060-DOB
Rød gummistop

Fastir - Omrøre



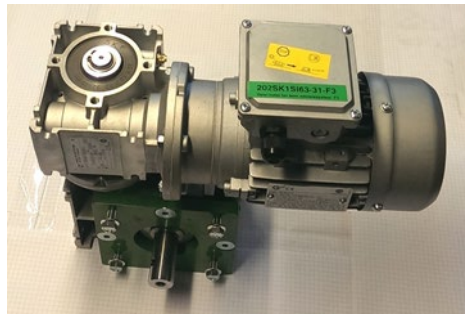
202SK-MSMYT631-4-2KL – Electric motor for gear for carriage, 1 phase system, 2 kondens, 230V



202SK1SI63-F1 - Gearmotor for rotating bar on stirring system, 1 phase system, 2 capacitor system (older)



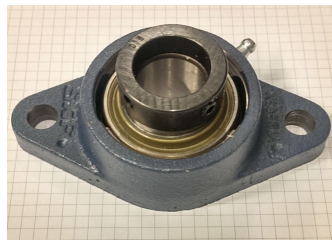
202SK-MS631-4-1 – Electric motor for gear for carriage, 3 phase system, 400V



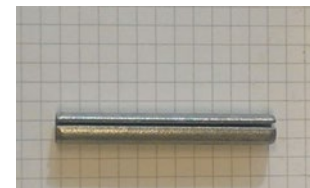
202SK1SI63-40-F3 - Gearmotor for rotating bar on stirring system, 3 phase system



J0355 – Pulley 9"

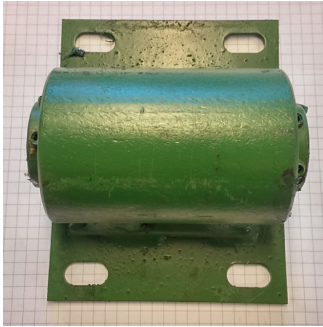


J00031-SKF - Flange bearing, 1"



J1510 – Rullpin 5/16 x 2 1/4", For pulley J0355

Fastir - Omrøre



A5649 - Bearing, pillow block comp., 1" for 21' – 36' bin



A5651 - Bearing, pillow block comp., 1 1/4" for 42' – 60' bin



J0030 - Clamp bearing, 1" For A5649



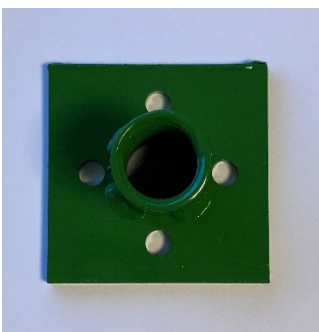
A5318 - Coupler 1" tube.



A5318 Klokobling



120A00-14-CDK050 – Rotating contact for stirring system, 16 pol, 2 + 3 augers.
120A00-14CDK070 - Rotating contact for stirring system, 20 pol, 4 + 5 augers.



A5597 Plade adaptor for drejekontat



121000241443
Nippelmuffe

1210413112349
Forskruning